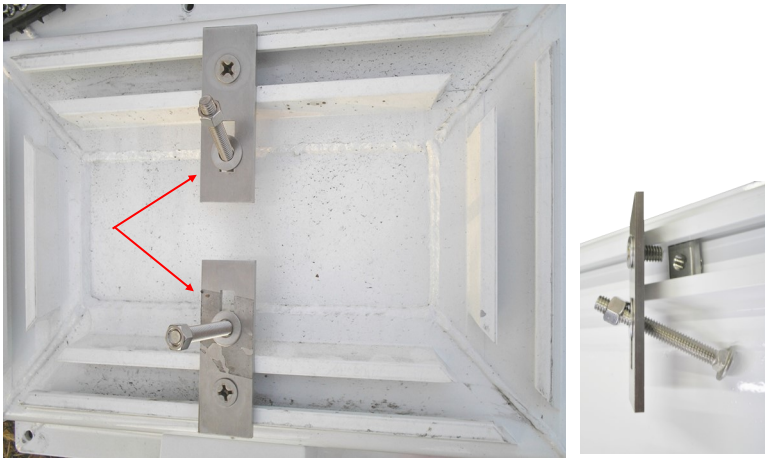


Flat Bracket Mounting Installation Options (Part #AR004)

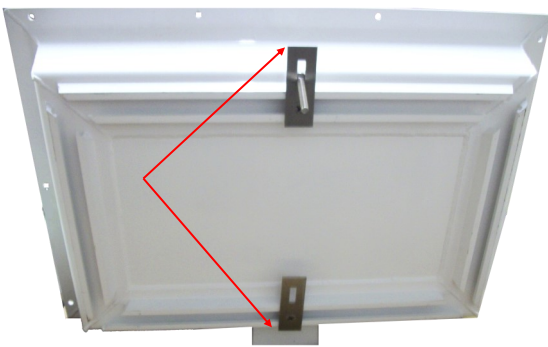
When installing the flat brackets on the back of the sign housing, the bracket can be positioned either above or below the housing.

This installation shows the flat brackets positioned below the sign housing.



- Flat Bracket Mounting Kit includes :**
- (2) Flat Brackets
 - (2) Spring Loaded Channel Nuts
 - (2) Carriage Bolts 3/8 x 16 x 3"
 - (2) Phillips Flathead Screws 3/8 x 16 x 3/4"
 - (2) Hex Nuts 3/8 X 16
 - (2) Washers 3/8

Depending on the hole pattern on your pole you may want to position the brackets above the sign housing.



Mounted above sign housing



Sign mounted on 2x2 pole with flat bracket



Sign mounted on U-channel pole with flat bracket